

EnSol, Inc.

Qualifications & Experience

***Providing Cost-Effective
Engineering & Environmental Solutions
for
Businesses & Municipalities***

- ❖ ***Civil & Environmental Consulting Services***
- ❖ ***Site Development & Planning***
- ❖ ***Solid & Hazardous Waste Management Services***
- ❖ ***Construction Services***
- ❖ ***Land Surveying Services***
- ❖ ***Site Investigations / Remediation Services***
- ❖ ***Storage Tank Services***
- ❖ ***Stormwater Permits & Plans***

EnSol, Inc.

**661 Main Street
Niagara Falls, New York 14301**

**Phone: (716) 285-3920
Fax: (716) 285-3928
Website: www.ensolinc.com**

TABLE OF CONTENTS

1	INTRODUCTION	1
	COMPANY BACKGROUND	1
	History	1
	Market Area	1
	Registrations	1
	EnSol Clients	2
2	ENSOL SERVICES OVERVIEW	3
	SOLID & HAZARDOUS WASTE MANAGEMENT	4
	Landfill Siting, Design and Permitting	4
	Transfer Facility Siting, Design and Permitting	4
	Operations Engineering	4
	Post Closure Maintenance, Monitoring and Reporting	4
	Facility Siting, Design and Permitting	5
	Remedial Investigations and Feasibility Studies	5
	Site Reclamation and Re-Use	5
	Hazardous Waste Post Closure Maintenance, Monitoring & Reporting	5
	CONSTRUCTION SERVICES	6
	Bid Document Preparation	6
	Construction Management	6
	Construction Inspection and Certification Services	6
	Environmental Remediation	6
	Environmental Monitoring	7
	Land Surveying	7
	LANDFILL MANAGEMENT AND ENGINEERING SERVICES	8
	Facility Inspection Services	8
	Environmental Monitoring and Reporting	8
	Leachate Collection Services	8
	Gas Management Services	8
	Closure and Post Closure Services	9
	ENVIRONMENTAL CONSULTING SERVICES	10
	Environmental Compliance and Review	10
	Brownfields	10
	Remedial Alternatives Report	10
	Phase I Site Assessment	11
	Phase II Site Assessment	11
	Shoreline Stabilization and Protection Permitting	11
	Market Research and Analysis	11
	Financial Planning and Modeling	12
	Contract Negotiations and Evaluations	12
	Tank Assessments, Registration and Remediation	12
	Waste Classification and Disposal	12
	Computer Systems Integration Services	12
3	REFERENCES	13
4	ORGANIZATIONAL CHART & KEY PERSONNEL/RESUMES	14

1 INTRODUCTION

EnSol, Inc. is a full-service engineering and environmental consulting firm that has grown and expanded to meet the needs and challenges of our clientele. Our team's approach is to develop and implement the most practical, cost-effective and environmentally sound solutions to meet our clients' needs.

As an integral part of a project management team, EnSol is committed to:

- Meeting industry challenges
- Providing practical and cost-effective management solutions
- Utilizing the best available technology to focus on client needs
- Building strong relationships with our clients
- Contributing to the success of each client's business
- Developing budgets and schedules
- Clearly defining and managing risks
- Meeting regulatory requirements
- Meeting deadlines

COMPANY BACKGROUND

History

EnSol was founded in June of 1995. At its beginning, its founders' entrepreneurial spirit and desire to respond to the growing need for solid waste management services provided the impetus to form a new company to focus on the design, permitting, construction, operation and closure of solid waste management facilities. EnSol's core of clients currently includes those in both the private and public sectors. EnSol has continually expanded its scope of services to include a broader range of related engineering and environmental services that are offered in response to clients' needs in an ever-changing marketplace. These services include site development and planning, site investigations and remediation, storage tank and process engineering, land surveying and mapping, stormwater design & management, structural design, special inspections, and construction inspections and monitoring. Continued success has enabled EnSol to develop a staff of trained, experienced engineers, surveyors, and environmental professionals to make this growth and expertise in problem solving possible.

Market Area

EnSol began with a client base in Upstate New York and Pennsylvania, and has since expanded its services to meet clients' needs throughout New York and the eastern United States. EnSol also provides services in several southern and midwestern states.

Registrations

EnSol maintains current Professional Engineering registrations and licensures in New York, Pennsylvania, Connecticut, Massachusetts, Florida, Ohio, Virginia, Texas, and Tennessee. We are licensed to practice Professional Land Surveying in New York.

EnSol's Clients

EnSol's client base includes national firms and local and regional private and public sector organizations:

National Companies

- Waste Management, Inc., Houston TX
- Casella Waste Systems, Inc., Rutland, VT
- Republic Industries, Inc., Lexington, KY
- Covanta Energy, Albany, NY

Local and Regional

- Modern Corporation, Model City, NY
- Somerset Operating Co, Barker, NY
- Ciminelli Development, Co., Inc., Williamsville, NY
- United Refining Co., Warren, PA
- IMA Life, Tonawanda, NY
- Diversified Manufacturing, Inc., Lockport, NY
- Kaleida Health Systems, Buffalo, NY
- H.W. Bryk & Sons, Inc., Niagara Falls, NY
- Metalico Industries, Rochester, NY
- Pariso Trucking, Tonawanda, NY
- ReEnergy Holdings, LLC, Latham, NY
- Capital Waste & Recycling, Inc., Albany, NY
- CWM Chemical Services, LLC, Model City, NY
- L&R Transfer Station, LLC, Freedom, NY
- Disposal Services, Inc., Rochester, NY
- Superior Disposal Services, PA
- Superior Environmental Services, FL
- Seneca Meadows, Inc., Waterloo, NY
- Spector Waste Paper Corp., Rochester, NY
- American Recycling Services, Inc., Rochester, NY
- Waste Stream Environmental, Inc., Weedsport, NY
- Calgon Carbon Corp., N. Tonawanda, NY
- Last Chance Recycling, Inc., DeWitt, NY
- Buffalo Fuel Corp., Buffalo, NY
- Material Exchange Corporation, Ocala, FL
- Son-Dar Enterprises, Inc., Mendon, NY

Public Sector

- Niagara Frontier Transportation Authority, Buffalo, NY
- Niagara Falls Water Board, Niagara Falls, NY
- Town of Tonawanda, NY
- Monroe County Pure Waters District, Rochester, NY
- Monroe County Department of Environmental Services, Rochester, NY
- Ontario County Department of Solid Waste Management, Canandaigua, NY
- Potter County Solid Waste Authority, Ulysses, PA
- Town of Brighton, NY
- New York State Office of Parks

2 ENSOL SERVICES OVERVIEW

ENVIRONMENTAL CONSULTING SERVICES

- State Environmental Quality Review (SEQR)
- Environmental Impact Statements
- Environmental Compliance & Review
- Environmental Site Assessments, Phase I / Phase II
- Facility Evaluations
- Site Investigations / Workplans
- Brownfields / Restoration
- Market Research & Analysis
- Financial Planning & Modeling
- Contract Negotiations & Evaluations
- Tank Assessments, Registration & Remediation
- Beneficial Use Determinations
- Waste Classification & Disposal
- Bulk Petroleum & Chemical Storage
- Pollution Prevention Plans
- Due Diligence
- Soil Vapor Emission Evaluation / Design
- Asbestos and Mold Surveys

CONSTRUCTION SERVICES

- Bid Document Preparation
- Construction Management
- Construction Inspection & Certification Services
- Environmental Remediation and Monitoring
- Land Surveying

STORMWATER PERMITS AND CONTROL

- Stormwater Discharge Permits
- Stormwater Pollution Prevention Plans
- Planning & Compliance Review
- Data & Field Sampling
- Reporting

LANDFILL MANAGEMENT AND ENGINEERING SERVICES

- Facility Inspection Services
- Environmental Monitoring & Reporting
- Leachate Collection Services
- Gas Management Services
- Closure & Post Closure Services
- Survey & Computer Mapping
- Best Management Practices
- Cost Estimates / Financial Analyses

SOLID WASTE MANAGEMENT

- Landfill Siting, Design & Permitting
- Transfer Station Siting, Design & Permitting
- Operations Engineering
- Post Closure Maintenance, Monitoring & Reporting
- Material Recovery Facilities / Recycling
- Disposal Services

HAZARDOUS WASTE MANAGEMENT

- Facility Siting, Design & Permitting
- Remedial Investigations & Feasibility Studies
- Site Reclamation & Reuse
- Post Closure Maintenance, Monitoring & Reporting
- Disposal Services

SYSTEMS INTEGRATION SERVICES

- Data Management
- Network Systems
- Application Development
- Systems Integration
- Office Productivity Systems
- Equipment Maintenance
- Software Support

Additional project descriptions are available upon request. Service overviews for several of EnSol's area of expertise are included in Appendix A.

SOLID & HAZARDOUS WASTE MANAGEMENT

Landfill Siting, Design and Permitting

EnSol, Inc. has demonstrated through the successful permitting, construction, operation, closure and post-closure activities of Municipal Solid Waste and Construction and Demolition Debris Landfills, our commitment to adequately and cost-effectively control and staff environmental projects. EnSol's project scope includes, but is not limited to:

- Permit Applications and Registration Process
- Permit Modifications & Renewals
- Regulatory Compliance and Reporting
- Environmental Impact Statements (EIS)
- Remedial Investigations/Feasibility Studies (RIFS)
- Construction Quality Assurance/Quality Control Plans (QA/QC)
- Management, Inspection and Observation Reporting of Construction Activities
- Hydrogeologic Reports
- Engineering Reports
- Operations and Maintenance Manuals
- HDPE Liner and HDPE Cover Systems
- Leachate Control and Management
- Gas Control and Recovery Facilities Management
- Environmental Monitoring Programs
- Contingency Plans and Reports
- Traffic, Odor and Noise Control
- Erosion Control and Stormwater Management
- Landfill Closure and Post-Closure Criteria
- Variance Requests and Beneficial Use Determination (BUD) Applications
- Due Diligence Summaries

Transfer Facility Siting, Design and Permitting

EnSol has successfully sited facilities and modified permits for existing solid waste transfer and processing facilities. Types of regulated material managed in the permit and design process at transfer facilities have included general municipal solid waste, construction and demolition debris and various recoverable recyclable materials. Design and permitting services provided include facility sizing, process engineering, process controls and maximization of storage within physical and regulatory constraints.

Operations Engineering

EnSol maintains field staff trained in solid waste management facility operational consulting. Our staff is experienced in the review, preparation and implementation of operational controls and performance criteria necessary for effective facility management. EnSol manages on-site personnel and conducts regular operational meetings at facilities. This provides the opportunity to discuss and modify facility operational techniques in order to maximize waste throughput in a manner that affords safeguards to the environment while increasing revenue.

Post Closure Maintenance, Monitoring and Reporting

EnSol has developed cost-effective post-closure facility monitoring and maintenance programs that effectively ensure safeguards to the environment, while meeting stringent governmental controls and regulations. Our plans ensure continued compliance with regulatory requirements throughout the entire post-closure period. This may include scheduled site visits to investigate the condition of monitoring points, drainage areas and in the case of landfills, the integrity of the final cover system.

Findings from site visits, as well as laboratory analytical data from scheduled monitoring events, are reviewed and discussed in quarterly or annual reports submitted to the appropriate regulatory agency.

Facility Siting, Design and Permitting

EnSol is proficient and experienced in siting criteria, design, and the permitting process for hazardous waste management facilities. A site may be subject to restrictions based on its proximity to wetlands, floodplains, aquifers, sensitive adjoining land uses or other conditions, which can often be resolved through innovative design features. Our diverse and knowledgeable staff is capable of effectively coordinating the expertise of attorneys and involvement of government officials in ways that maximize capital investments and reduce long-term risks. EnSol has successfully guided projects through the permitting process to the satisfaction of our clients and all regulatory agencies and, at the same time, provided safe and cost-effective landfill design alternatives.

Remedial Investigations and Feasibility Studies

With more than ten years of experience in developing remedial alternatives for existing, non-compliant disposal sites, EnSol staff members are well equipped to determine the most cost-effective remedial alternative, and implementing the remedy to protect the welfare of the environment and citizenry pursuant to regulatory mandates and timeframes. EnSol develops Workplans that are custom-tailored and guides a client from the status of a principally responsible party to that of an environmentally responsive party. Our experience allows for the cost-effective and timely implementation of remedial measures to ensure the satisfaction of adjacent landowners, citizens, regulators and most importantly, to the satisfaction of our client.

Site Reclamation and Re-Use

Wherever possible, given the regulatory climate for the reuse of lands only mildly contaminated in the 'Brownfields' approach, EnSol develops environmentally responsible options for reclaiming lands without the costly remedial or rehabilitative efforts that are often automatically prescribed. EnSol thoroughly evaluates site information, history and analytical data to make the demonstration, where appropriate, that the site can be reused or reclaimed for a secondary, compatible use. Using the best and most appropriate available technologies, EnSol makes technical demonstrations supporting the proposed secondary land use. EnSol guides the client through regulatory mandates in the pursuit of reclaiming or reusing a site that was previously deemed 'hazardous'.

Hazardous Waste Post Closure Maintenance, Monitoring and Reporting

Owners/operators often continue to maintain on-site operations and support infrastructure after a hazardous waste management facility has closed. However, meeting post-closure obligations and responsibilities does not always necessitate the need to maintain presence, equipment and employees at the site. EnSol has allowed owner/operators in several states to close facilities while keeping only financial mechanisms and arrangements in place to address any post-closure needs. Whether administering the post-closure monitoring program, inspecting and verifying cover integrity, or maintaining stormwater controls, EnSol allows clients to focus efforts and resources on their company's next endeavor while providing post-closure care services. The provision of these services, from monitoring well sample collection to quarterly and annual reporting, allows the freedom to develop other business interests without being distracted by the demands of a closed facility.

CONSTRUCTION SERVICES

Bid Document Preparation

EnSol develops conceptual and construction drawings and specifications for any solid waste management facility construction projects. EnSol works closely with our clients to incorporate special design or material considerations into bid specifications. Once approved, the bid document packages can be submitted to one or several contractors with whom we have developed a business relationship, or, the packages can be submitted to potential bidders of our clients' choice. EnSol manages the time-consuming and often-cumbersome challenge of putting projects out for tender, and reviews the submittals to ensure that they meet the criteria specified in the bid packages.

Construction Management

Construction management and contracting services are provided to facility owners/developers who do not possess the staff necessary to effectively manage and control facility construction operations and costs. Project management involving the client, regulatory agencies, contractors, sub-contractors and material vendors is undertaken to complete the project. EnSol coordinates all contractor activities to ensure timely completion of the project within budget constraints and in accordance with design specifications and regulatory requirements. EnSol manages any problems that may arise to ensure that the outcome is to the satisfaction of all parties involved. Through project meetings and correspondence, our clients are provided with detailed reports regarding all construction activities associated with the timely and cost-effective completion of construction.

Construction Inspection and Certification Services

Qualified, experienced representatives of EnSol are on-site to observe, inspect and document construction activities ranging from landfill liner placement to concrete and soil placement to tank installations. To ensure that all work done is in accordance with agency-approved project specifications, the findings of daily inspections will be used to develop a Certification Report. Certification Reports are prepared under the direction of a licensed Professional Engineer and submitted to regulatory agencies for review and subsequent approval. Documenting each stage of construction, the Certification Report includes daily inspection logs and photo diaries produced during construction, detailing the conditions of the job site, weather conditions on site, personnel involved, materials and equipment utilized, results of testing performed, QA/QC procedures utilized, and any necessary field modifications made during the course of construction.

Environmental Remediation

EnSol, Inc. provides remediation for sites requiring environmental clean-up. Our comprehensive approach to cleaning contaminated surroundings is economically efficient and environmentally sound. EnSol's remediation capabilities include:

- Work Plan Development
- Interaction with Regulatory Agencies
- Investigative Activities
- Evaluation of Remedial Alternatives Including:
 - Soil Removal / Disposal
 - In-situ Remediation
 - Soil Washing and/or Thermo Treatment

- Site Backfill and Reclamation
- Tank Removal and Closure
- Groundwater Collection and Treatment
- Barrier Installation
- Field Engineering and Construction Management
- Certification
- Tank Assessments, Registration and Remediation

EnSol assists our clients to understand the myriad of requirements that regulatory agencies place on aboveground and underground storage tanks. EnSol is involved with the planning, design and installation of new tanks, and assessment, registration and removal of existing tanks. Whether adding, removing or replacing, EnSol has a tank management strategy that is right for our clients' sites. EnSol applies 'hands-on' management of storage tanks, maintains compliance with local, state and federal regulations, ascertains compliance with leak detection, overflow protection and tank monitoring, as well as determines day-to-day operational requirements. EnSol will do the whole job, from preliminary tank specification, to removal and disposal, and final certification of job completion in accordance with applicable regulatory guidelines and requirements. EnSol certifies the integrity of underground storage tank installations through our tank certification criteria.

Cost-effective remediation projects require a working approach with the contractor, owner and regulators. Our team is experienced in operating with a host of owners (both municipal and private) in coordinating and executing cost effective remediation programs.

Managing small and large remediation projects requires the attention of skilled environmental professionals. We ensure with proper documentation and certification that your site has been certified clean.

Environmental Monitoring

- Preparation of Health and Safety Plans (HASPs)
- Oversight during construction for OSHA compliance and worker safety
- Documentation and perimeter air monitoring and sampling
- Soil screening and analytical sampling

Land Surveying

- Construction stakeout
- Machine Control Systems
- Topographic surveys and mapping
- Property Boundary Surveys
- Volume and quantity calculations
- 3-dimensional model development
- Site Monumentation and Control
- GPS Mapping and Surveys

LANDFILL MANAGEMENT AND ENGINEERING SERVICES

Landfill Management and Engineering (LME) Services was developed in response to our clients' need for solid and hazardous waste facility management especially during the post-closure period. For each facility, an environmental monitoring program (EMP) is developed according to regulatory requirements. The data collected is organized in digital format, offering fast access to client's records, and facilitating reporting to regulatory agencies.

Facility Inspection Services

EnSol performs the following activities for facility inspection:

- Site inspection
- Groundskeeping
- Maintenance and upkeep of stormwater control system
- Cap cover repairs
- Access control
- Contingency management

Environmental Monitoring and Reporting

All landfill operators are required to monitor the surrounding environment during operations, closure and post-closure phases in order to protect human health and the environment. Site-specific Environmental Monitoring Plans are prepared that outline the media that must be sampled and analyzed. Existing water, soil or air quality is determined as part of the preparation of the EMP, and compared to subsequent water quality data collected during scheduled monitoring events. EnSol will coordinate all monitoring activities and review analytical data before submitting all required documentation to the appropriate regulatory agencies.

Leachate Collection Services

Maintenance and operation of leachate collection systems is required during active, closure and post-closure periods as long as leachate is being generated. EnSol will perform the following activities:

- Tank testing and certification
- Maintenance of pipes, pumps and controls
- Sampling and data review
- Recordkeeping and reporting
- Leachate disposal
- Corrective action

Gas Management Services

Landfills present unique problems in that they are subject to settling, leachate seepage, and continuously varying gas makeup. EnSol, Inc. offers specialization in the recovery of methane gas from landfills for the purpose of creating profitable and environmental benefits by using the landfill gas (LFG) as an alternative energy source. Our experienced team has the know-how to design and manage a LFG-to-electricity system to overcome these problems, both in the office and in the field.

The implementation of a LFG-to-electricity system involves four main areas: gas wells, LFG collection system, gas scrubbing system, and gas engines and electrical switchgear. After installing the gas wells and LFG collection system, the quantity of gas is monitored so that the correct size LFG-to-

X:\Marketing and Proposals\Marketing\Q & E\Q & E (Current)_QE Text 2020.doc

electricity plant can be determined. Our experience in this area is key to the overall success of the LFG-to-electricity system.

EnSol, Inc. works closely with Innovative Energy Systems, Inc. (IES) in providing the gas management services required for gas collection and electrical generation. IES has Corporate Headquarters located in Clarence, New York with two subsidiary firms: LFG Energy, Inc., located in Lancaster, New York; and Seneca Energy, Inc., located in Seneca Falls, New York. LFG Energy, Inc. and Seneca Energy, Inc. own and operate 6.6 MW and 11.2 MW LFG-to-electricity facilities, respectively.

IES have developed proven technology that enables the company to provide turnkey design, well drilling services, and fully constructed systems for the use of recovering landfill gas in a cost-effective and profitable manner. EnSol and IES utilize proprietary technology with respect to LFG wells, LFG collection systems, LFG scrubbing systems and LFG-to-electricity plant design. EnSol, working with IES, installs all components of a LFG-to-electricity system and will manage and operate the system. EnSol and IES strive to provide the best available technology and prides itself on industrial knowledge.

Once the plant size has been determined, IES will construct a gas scrubbing system and the generating plant. Their proprietary gas scrubbing system is the key to ensuring the life of the gas engines and the plants operating viability. This is because LFG contains water, particulate, and acids that harm the gas engines. The gas engines, generator sets and associated electrical switch gear come as a complete set from Caterpillar, Inc.

EnSol has the capability of providing all design, engineering, construction, manufacturing and administrative services necessary in a complete turnkey package. EnSol employs experienced and qualified technicians to properly assess the hazards that landfill gas creates.

EnSol's experience, combined with IES's proprietary technology, produces a quality plant that is cost-effective and proven in reliability.

Closure and Post Closure Services

EnSol offers a full range of environmental monitoring, compliance and data management services essential to the maintenance of solid waste management facilities. Our goal is to ensure that our clients meet all regulatory criteria for operating solid waste facilities. In addition, our programs provide fast and efficient access to facility information.

EnSol, Inc. will provide your firm with comprehensive management services or will work with your staff to address specific facility needs in any aspect of operations. We draw from a staff that is experienced in the operation of active landfills as well as in closure and post-closure management.

ENVIRONMENTAL CONSULTING SERVICES

Environmental Compliance and Review

EnSol assesses a site with regard to applicable regulatory frameworks, operating permits and approvals in order to determine whether a site is in compliance. Site inspections and facility operations monitoring are undertaken to determine compliance with local, state and/or federal requirements. Once an adequate information base has been established that characterizes operations at the facility, EnSol proposes facility improvements in a report format that clearly identifies cost savings associated with each modification or improvement identified. Some of our clients refer to us as 'efficiency experts,' as we have made numerous cost-effective improvements at many solid waste management facilities. EnSol firmly believes that, with our inspections and reviews, a facility can be run efficiently and cost-effectively.

Environmental Site Assessments (ESA) and Brownfields

EPA defines Brownfields as abandoned, idled, or under-used industrial and commercial facilities where expansion or redevelopment is complicated by real or perceived environmental contamination.

EnSol is expertly qualified to provide clients with Environmental Site Assessment (ESA) and Brownfield clean-up capability to assist communities in revitalizing such properties, both environmentally and economically. The major components of a Brownfield ESA are the Remedial Investigation (RI) and Alternatives Analysis Report (AAR) for the Proposed Remedial Action Plan.

Remedial Investigation/AAR Workplan includes;

- Records Review and Interviews, Site Reconnaissance
- Develop and Fulfill RI/AAR Workplan Objectives
- Evaluation & Report
- Develop Alternatives and Analysis of Alternatives

The purpose of this Brownfield Site Assessment is to identify, to the extent feasible per Standard Practice guidelines, recognized environmental conditions in connection with real property. The Records Review, Site Reconnaissance, and Interviews are used in concert with each other to provide a comprehensive history of site conditions. Recognized Environmental Condition (REC) The Site Investigation will provide sufficient information to fulfill the workplan objectives and make a preliminary identification of potential remedial alternatives. Additionally, the SI will further define the study area of the SI/RAR and perform a Health and Environmental Risk Assessment as necessary.

The second component of a Brownfield assessment performed by EnSol is the Interim Remedial Measures Plan and Remedial Action Plan which includes:

- Work Plan Development
- Investigative Functions
- Evaluation and Reporting of Activities
- Presentation of Findings and Conclusions

The objective of Remedial Alternatives Report is to evaluate the RECs identified in the Site Investigation. The RAR will include descriptions of the site, the nature and extent of contamination as well as a discussion on identification and development of alternatives, a detailed analysis of alternatives with individual and comparative analysis.

Based on the findings of the RI/RA Report, a Proposed Remedial Action Plan (PRAP) can be prepared by EnSol, or a regulatory agency, which summarizes the proposed remedy for the property.

Phase I Site Assessment

The purpose of a Phase I Environmental Site Assessment and Transaction Screen Process is to identify, to the extent feasible per Standard Practice Guidelines, recognized environmental conditions in connection with real property. EnSol performs Environmental Site Assessment (ESA) for clients who seek to sell or endeavor to purchase lands and/or facilities for commercial use.

The four major components of a Phase I ESA are records review, site reconnaissance, interviews and evaluation and report. To identify the environmental risk associated with a site prior to a property transfer these audits generally include a site visit, research into the present and past uses of the site with regard to activities that may have resulted in contamination, investigation of the site regulatory history as well as collection and analysis of any available analytical data. Based on these activities, EnSol will make a recommendation regarding any suspected presence or sources of potential contamination or Recognized Environmental Conditions (RECs) associated with the site. EnSol brings its professional experience to the fore in providing clients with timely and accurate information gathered from this assessment procedure.

Phase II Site Assessment

The objective of conducting a Phase II ESA is to sample and evaluate the Recognized Environmental Conditions (RECs) identified in the Phase I ESA or Transaction Screen Process. Simply stated, a Phase II ESA is used to develop sufficient information regarding a site to meet the business objectives of the user and to provide sufficient data to assist the user in making informed business decisions.

EnSol is expertly qualified to provide clients with Phase II Site Assessment services. The components of a Phase II ESA are workplan development, site investigation activities, evaluation and presentation of data, and presentation of findings and conclusions. Our goal is to develop information from which a professional opinion can be rendered that, with respect to the RECs investigated, hazardous substances have not been disposed or released at the property, thereby satisfying the innocent purchaser defense under CERCLA as to those recognized environmental conditions.

Shoreline Stabilization and Protection Permitting

Many property owners along the Lake Ontario and Niagara River shorelines have been faced with substantial loss of property due to high water levels and wind-driven high wave events. Erosion has caused loss of property, trees and soil, unstable banks, and has created difficult and hazardous conditions for the property owners to access the waterfront areas of their properties. EnSol has worked with property owners to evaluate shoreline stabilization controls that would prevent loss of property adjacent to the lake and the river. On behalf of these property owners, EnSol has completed Coastal Erosion Permit Applications to obtain necessary approvals from New York State and the Army Corps of Engineers for the implementation of engineering controls to stabilize the shoreline.

Market Research and Analysis

Wherever located, EnSol can perform market research specific to our clients' needs. Landfills, transfer stations and every other solid waste management facility will at one time or another, find themselves depending on information related to market conditions. Whether seeking to expand or diversify, EnSol can help tailor facility decision-making objectives to take advantage of current, ever-changing market conditions. The identification of greater revenue-generating opportunities will allow for increased throughput. Findings can be delivered either in report form or presentation. Either way, EnSol assists our clients to plan and strategize, taking full advantage of the market and increasing our clients' bottom line.

Financial Planning and Modeling

In conjunction with performing market research and analyses, EnSol is capable of developing long-

term financial steering and development plans. EnSol will determine how long it will take to pay for improvements to facilities, or to make returns on recently acquired facilities given modifications to operating procedures. John Battaglia, P.E., founder of EnSol, holds an MBA from the University of Buffalo and has aided both private and public sector facility operators and owners in the responsible fiscal management and resource allocation required to help ensure the long-term viability of the facility.

Contract Negotiations and Evaluations

In order to complement the financial planning and modeling services rendered, EnSol will act as an agent for the client, or simply act in a review capacity to ensure that the client's best interests are conveyed through contract negotiations. EnSol has a proven record of combining individuals' separate interests into a collective agreement that not only benefits the group as a whole, but more importantly, protects our clients' interests and investment while reducing risks. EnSol identifies possible 'show stoppers' early on in any deal and appropriately circumvents these possible hindrances. EnSol directs attorneys and heads up legal project management to ensure that our clients remain in control of their projects. Whether we act proactively in protecting our clients' best interests, or in a technical support or advisory role, EnSol's experience minimizes project implementation costs through enhanced project and legal management.

Tank Assessments, Registration and Remediation

EnSol assists our clients in understanding the myriad requirements that regulatory agencies place on aboveground and underground storage tanks. EnSol is involved with the planning, design and installation of new tanks, and assessment, registration and removal of existing tanks. Whether adding, removing or replacing, EnSol has a tank management strategy that is right for our clients' sites. EnSol applies 'hands-on' management of storage tanks, maintains compliance with local, state and federal regulations, ascertains compliance with leak detection, overfill protection and tank monitoring, as well as determines day-to-day operational requirements. EnSol will do the whole job, from preliminary tank specification, to removal and disposal, to certification of job completion in accordance with applicable regulatory guidelines and requirements. EnSol certifies the integrity of aboveground and underground storage tanks and their surroundings through our tank certification criteria.

Waste Classification and Disposal

With more than ten years of actual operating experience, EnSol staff are poised to assist in the correct classification and review of solid, commercial or industrial waste streams that may be either acceptable, hazardous, unauthorized or unacceptable depending on particular circumstances and regulatory settings. Our certified personnel reviews spill reports, Material Safety Data Sheets (MSDS), consulting engineers' findings, laboratory analytical reports, and manufacturers' data to confirm that the material is compatible with the facility and operating permit. In the absence of data, EnSol directs laboratories to perform specific analyses that will reduce laboratory analytical costs and streamline the waste acceptance procedure. This allows for a more timely response to those requiring services in managing the waste appropriately. In the absence of a waste acceptance protocol in place, we develop a screening process for our clients.

Computer Systems Integration Services

Specializing in database and file management, our team of system professionals develops software applications to manage the data stream generated by solid waste management projects. Focused areas include data collection and analysis, site mapping and information, operations and maintenance, permitting, database design, electronic record-keeping and file management.

3 REFERENCES

Robert Morris
Town of Tonawanda
Technical Support Dept.
2919 Delaware Avenue, Kenmore, NY 14217
(716) 877-8805

Jonathan Rizzo
CWM Chemical Services, LLC
1550 Balmer Rd., P.O. Box 200, Model City, NY 14107
(716) 754-0325

Mark Marsack, PE
Modern Corporation
4746 Model City Road, Model City, NY 14107
(716) 754-8226

Kyle Black
Seneca Meadows, Inc.
1786 Salcman Road, Waterloo, NY 13165
(715) 539-5624

Michelle Blackley
Somerset Operating Co, LLC
7725 Lake Road, Barker, NY 14012
(716) 795-9501

Norm Williamson, PE
Niagara Falls Water Board
5815 Buffalo Avenue, Niagara Falls, NY 14304
(716) 283-9770

Thomas Nye
UCC Constructors
105 Center Road, P.O. Box 648, West Seneca, NY 14224
(716) 822-5755

Jeff DeFranco
NYS Industrial Coatings, Inc.
108 Colvin Street, Rochester, NY 14611
(804) 843-9288

Greg Leahey
ReEnergy Holdings, LLC
20 Century Hill Drive, Suite 203, Latham, NY 12201
(518) 641-0032

Sam Santarosa
International Waste Removal, Inc.
344 Vulcan Street, Buffalo, NY
(716) 873-7196

4 ORGANIZATIONAL CHART & KEY PERSONNEL/RESUMES

EnSol's current Organizational Chart is included in Appendix B.

Resumes for individual personnel to be included on a project-specific basis, including records of individual training and certifications, are available upon request.

Appendix A

EnSol, Inc. *Environmental Solutions*

professional engineering - business consulting

Service Overviews

EnSol, Inc.

Engineering • Environmental • Business Consulting
661 Main Street Niagara Falls, NY 14301
(716) 285-3920
www.ensolinc.com

- ❖ ***SHORELINE STABILIZATION PROTECTION PERMITTING***
- ❖ ***ENVIRONMENTAL MONITORING & SAMPLING***
- ❖ ***BROWNFIELD REDEVELOPMENT***
- ❖ ***PHASE I ENVIRONMENTAL SITE ASSESSMENTS***
- ❖ ***PHASE II ENVIRONMENTAL SITE ASSESSMENTS***
- ❖ ***ASBESTOS, LEAD, AND MOLD SERVICES***
- ❖ ***RADIATION MONITORING & SURVEYS***
- ❖ ***LANDFILL MANAGEMENT & ENGINEERING***

EnSol, Inc.

Engineering • Environmental • Business Consulting
661 Main Street Niagara Falls, NY
www.ensolinc.com

OVERVIEW OF SHORELINE STABILIZATION AND PROTECTION PERMITTING

Many property owners along the Lake Ontario and Niagara River shorelines have been faced with substantial loss of property due to high water levels and wind-driven high wave events. Erosion has caused loss of property, trees and soil, unstable banks, and has created difficult and hazardous conditions for the property owners to access the waterfront areas of their properties. EnSol, Inc. has worked with property owners along the Lake Ontario and Niagara River shorelines to evaluate shoreline stabilization controls that would prevent loss of property adjacent to the lake and the river.



EnSol has completed Coastal Erosion Permit Applications for a variety of clients along Lake Ontario and the Niagara River. On behalf of these property owners, EnSol obtained necessary approvals from New York State and the Army Corps of Engineers for the implementation of engineering controls to stabilize the shoreline.



Typical tasks that EnSol will complete for a shoreline permitting project include:

- Documentation of existing site conditions and field survey
- Consultation with property owner and NYSDEC staff
- Conceptual and final grading plans
- Preparation of engineering plans and details for shoreline stabilization and erosion control features
- Estimation of material quantities for system construction
- Preparation of NYS Environmental Quality Review Act (SEQR) Environmental Assessment Form
- Preparation of NYSDOS Coastal Management Program Permit Application
- Preparation of US Army Corps of Engineers/NYSDEC Joint Application
- Application review with property owner, and final submittal

EnSol, Inc.

Engineering • Environmental • Business Consulting
661 Main Street Niagara Falls, NY
www.ensolinc.com

OVERVIEW OF ENVIRONMENTAL MONITORING & SAMPLING

EnSol provides complete soil, groundwater, and surface water sampling services, air monitoring services, and environmental oversight services in support of site assessments, remedial investigations and cleanups, Operation and Maintenance (O&M) plans, and Site Management Plans (SMP's).

Sites where environmental monitoring and sampling have been conducted at include brownfield developments, active, inactive, and historic landfills, industrial facilities, environmental restoration sites, remediation sites, and Formerly Utilized Sites Remedial Action Program (FUSRAP) sites.

We also provide related services such as supervision of monitoring well installation and abandonment, hazardous waste inventory and sampling, and tank sampling and supervision of tank removal and disposal. EnSol also maintains professional relationships with numerous local and regional analytical laboratories.



EnSol has extensive environmental monitoring and sampling experience for a variety of clients including, but not limited to:

- Benderson Development Company
- ReEnergy Holdings, LLC
- Steelfields, LTD
- CWM Chemical Services, LLC
- Modern Corporation
- Town of Tonawanda
- American Rock Salt Company
- American Remediation Solutions and Environmental Corporation (ARSEC)
- WeCare Organics, Inc.
- Buffalo Truck Center, Inc.

EnSol, Inc.

Engineering • Environmental • Business Consulting
661 Main Street Niagara Falls, NY
www.ensolinc.com

OVERVIEW OF BROWNFIELD REDEVELOPMENT SERVICES

Brownfields are defined as abandoned or underutilized sites with environmental concerns that complicate the reuse of the property. Brownfield redevelopment offers potential opportunities for retail, commercial, residential, and industrial center projects and state and federal programs have been established that provide economic incentives and liability protections to potential brownfield redevelopers.

As part of the brownfield redevelopment services, EnSol has the ability to assist private parties, municipalities, developers, and businesses in the assessment, cleanup, and restoration of brownfield properties to productive use.

EnSol's brownfield redevelopment services include, but are not limited to:

- Application Assistance
- Site Assessments
- Remediation Design and Oversight
- Regulatory Compliance and Coordination
- Preparation of Project-Related Documents



Ensol has previously conducted a limited pre-application assessment for MWT Architecture and most recently provided complete brownfield redevelopment services to Benderson Development Company, LLC and Buffalo Truck Center, Inc.

EnSol, Inc.

Engineering • Environmental • Business Consulting
661 Main Street Niagara Falls, NY
www.ensolinc.com

OVERVIEW OF PHASE I ENVIRONMENTAL SITE ASSESSMENTS

Phase I Environmental Site Assessments (Phase I ESAs) are generally conducted as either a condition of financing for a property transaction or a voluntary due diligence action. Generally, Phase I ESAs required by a third party (such as a lending institution) must be completed in accordance with the Federal requirements for All Appropriate Inquiry and the ASTM Practice E-1527-13, Environmental Assessments: Phase I Environmental Site Assessment Process, and also with the U.S. EPA's All Appropriate Inquiries Rule. The staff at EnSol have extensive experience in conducting both ASTM and non-ASTM Phase I ESAs.

Typical tasks that EnSol will complete during the execution of a Phase I ESA include:

- Database and Environmental Records Review
- Site Reconnaissance
- Interviews with Site Personnel/Owner(s)
- Facility Records Review
- Report Development, Review with Client, and Final Submittal



A Phase I ESA typically results in one of two outcomes; a determination that no recognized environmental concerns (RECs) exist on the property, or a determination that RECs, such as past or current presence of underground storage tanks, do exist on the property. The discovery of RECs during the Phase I ESA process typically results in the need to conduct a Phase II ESA to assess subsurface soil and/or groundwater conditions.

Ensol, Inc. has completed Phase I ESAs for a variety of clients including, but not limited to:

- Benderson Development Company
- Richardson Management
- ReEnergy Holdings, LLC
- JFD Holdings L.P.
- Scrufari Construction Company
- Upstate Shredding, LLC.
- Light Tower Rentals



EnSol, Inc.

Engineering • Environmental • Business Consulting
661 Main Street Niagara Falls, NY
www.ensolinc.com

OVERVIEW OF PHASE II ENVIRONMENTAL SITE ASSESSMENTS

The purpose of any Phase II ESA is to determine the subsurface conditions at the subject property with the primary goal of determining if any soil and/or groundwater remedial actions are required prior to site redevelopment. EnSol follows the ASTM-E-1903 Standard Guide for Environmental Site Assessments: Phase II ESA Process as a basis for conducting Phase II ESAs, tailored to the unique concerns and objectives at each site. Each Phase II ESA is unique by circumstances of past use and environmental concerns, and each Phase II will be specific to evaluate the unique situation at each property.

The components of a standard Phase II ESA consist of the following:

- Development of a Phase II ESA Scope of Work
- Assessment activities, field work and data collection
- Evaluation and presentation of data
- Report preparation, presentation of findings and conclusions



EnSol maintains professional relationships with numerous local and regional analytical laboratories as well as subsurface drilling companies. These relationships enable us to cater a Phase II to the specific needs of a given project while ensuring that all subcontracted work is completed accurately and competitively.



Ensol, Inc. has completed Phase II ESAs for a variety of clients including, but not limited to:

- Buffalo Truck Center, Inc.
- ReEnergy Holdings, LLC
- United Refining Company
- MWT Architecture
- CWM Chemical Services, LLC
- Modern Corporation
- SADO Gas Sales

EnSol, Inc.

Engineering • Environmental • Business Consulting
661 Main Street Niagara Falls, NY
www.ensolinc.com

OVERVIEW OF ASBESTOS, LEAD, AND MOLD INSPECTION SERVICES

EnSol maintains a current Asbestos Handling License with the New York State Department of Labor (NYSDOL) and EnSol employees hold current NYSDOL Inspector, Designer, and Management Planner Asbestos Safety Training certificates. Cumulatively, these professionals can execute any scope of work requiring asbestos surveys, sampling, reporting, remediation design, and the preparation of asbestos operation & maintenance (O&M) plans.

.Additionally, EnSol's affiliated company, The Environmental Service Group (NY), Inc. (ESG), also maintains a current Asbestos Handling License with the NYSDOL. Accordingly, the two affiliated companies (EnSol/ESG) are prepared to provide a wide variety of asbestos related services ranging from initial surveys and sampling to complete removal and remediation.

EnSol also provides limited lead and mold inspections using industry accepted procedures.



Ensol, Inc. has provided asbestos, lead, or mold inspection services for a variety of clients including, but not limited to:

- Travelers Insurance
- Benderson Development Company
- McGuire Development Company
- General Mills
- Modern Corporation
- Miranda Properties
- Town of Lewiston
- Town of Tonawanda
- Treibacher Schleifmittel

EnSol, Inc.

Engineering • Environmental • Business Consulting
661 Main Street Niagara Falls, NY
www.ensolinc.com

OVERVIEW OF RADIATION MONITORING & SURVEYS

EnSol offers Radiation Monitoring and Survey services to our clients, either as a standalone service, or a complement to our other services. EnSol maintains an assortment of Radiation Monitoring equipment for most any situation, and has the capability of providing a one or multiple person(s) survey crew depending on project needs. Along with the monitoring and survey services, EnSol has professional engineering, environmental, and Health and Safety expertise to provide expanded services when needed.

We also provide related services such as program development, training, site investigations, supervision of monitoring well installation and abandonment, hazardous waste inventory and sampling, and waste disposal. EnSol maintains relationships with numerous local and regional analytical laboratories to handle specialty testing needs in support of these services.

Typical tasks executed by EnSol during a Radiation Monitoring or Survey project include:



- Establishing background levels for the site
- Site Wide or Focused Area Survey Sweep
- Recording measurements obtained during operations
- Delineation of possible areas of concern
- Sampling and Identification of Radioactive Isotopes
- Site Plan Development
- Report Development, Review with Client, and Final Submittal

EnSol, Inc. has provided monitoring and surveying services for a variety of clients including, but not limited to:

- National Fuel Gas Company
- Benderson Development Company
- CWM Chemical Services, LLC.
- Modern Corporation
- PerOxy Chem
- The Environmental Service Group
- Erie County Medical Center
- Residential Owners



EnSol, Inc.

Engineering • Environmental • Business Consulting
661 Main Street Niagara Falls, NY 14301
(716) 285-3920
www.ensolinc.com

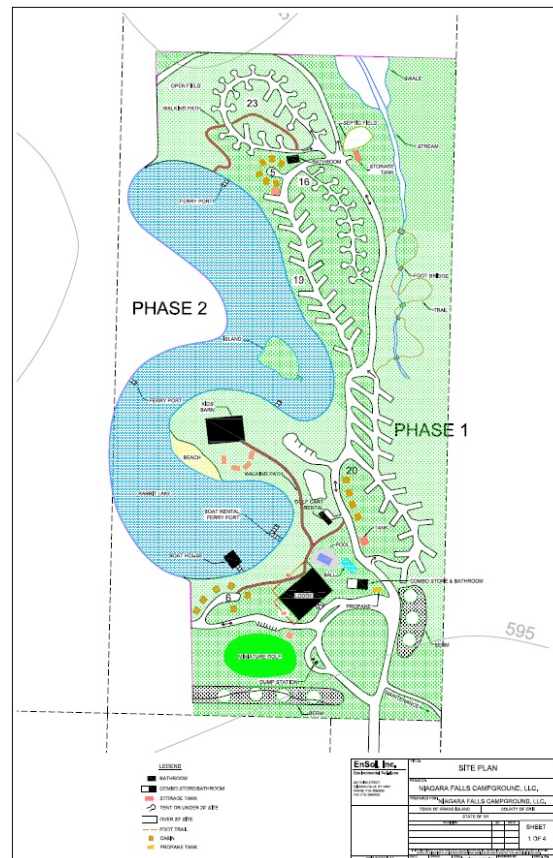
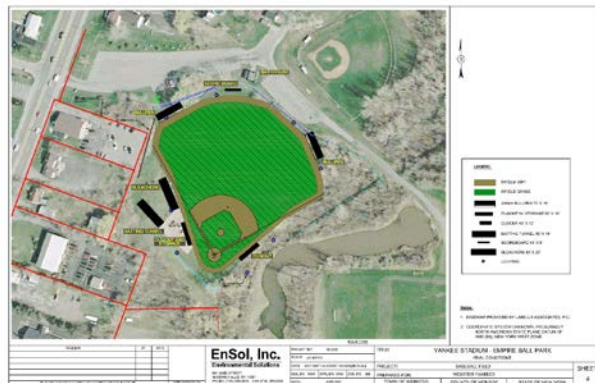
- ❖ ***SITE DESIGN & DEVELOPMENT***
- ❖ ***LAND SURVEYING SERVICES***
- ❖ ***CONSTRUCTION SWPPP'S***
- ❖ ***INDUSTRIAL SWPPP'S***
- ❖ ***TANK INSPECTION & DESIGN SERVICES***
- ❖ ***SPCC PLANS***
- ❖ ***COATING AND LINING TESTING & INSPECTION***
- ❖ ***CONSTRUCTION MATERIALS TESTING & INSPECTION***
- ❖ ***LINER INTEGRITY SURVEYS***

EnSol, Inc.

Engineering • Environmental • Business Consulting
 661 Main Street Niagara Falls, NY
 www.ensolinc.com

OVERVIEW OF SITE DESIGN AND DEVELOPMENT SERVICES

A Site Design and Development job can be as simple as planning a small addition to your facility or as complicated as designing an entire office park from the ground up. EnSol's expertise and knowledge in CADD drafting, surveying, permitting, construction management, regulatory compliance, inspection and certification, and project management enable us to meet the demands of almost any Site Design and Development project. Although each site is unique, EnSol is able to draw on our past experience, to always handle your project with the individual attention required to meet project-specific demands and goals.



Ensol, Inc. has provided a variety of Site Design and Development Services to local and regional entities including, but not limited to:

- The Town of Tonawanda
- Niagara Falls Campground
- Buffalo Recycling Enterprises
- Modern Recycling
- LaFarge North America
- Niagara County Community College
- Webster Yankee Stadium Corporation

EnSol, Inc.

Engineering • Environmental • Business Consulting
661 Main Street Niagara Falls, NY
www.ensolinc.com

OVERVIEW OF SURVEYING SERVICES

EnSol offers a broad array of surveying services to our clients, either as stand-alone service, or as a complement to our other services. EnSol maintains a full assortment of surveying equipment for any situation, and has the capability of providing a one-person survey crew for a more cost-effective approach. Along with the surveying equipment, EnSol has powerful drafting and 3-D modeling software to process the survey information collected in the field and prepare record drawings, in-place volumetric calculations, or three dimensional digital terrain models which can then be used as a basis for site development.



EnSol can provide the following on-site survey services:

- Topographic Surveying
- Construction Stakeout
- Stockpile Volumetric Surveying
- 3-D modeling for heavy equipment GPS machine control systems
- Drone Mapping

Ensol, Inc. has provided surveying services for a variety of clients including, but not limited to:

- CWM Chemical Services, LLC
- Covanta Energy
- ReEnergy Holdings, LLC
- Waste Management, Inc.
- Modern Corporation
- Town of Tonawanda
- Buffalo Recycling Enterprises
- Seneca Meadows, Inc.
- Buffalo Truck Center, Inc.

EnSol, Inc.

Engineering • Environmental • Business Consulting
661 Main Street Niagara Falls, NY
www.ensolinc.com

OVERVIEW OF CONSTRUCTION STORMWATER POLLUTION PREVENTION PLANS (SWPPP'S)

Construction Stormwater Pollution Prevention Plans (SWPPP's) are prepared to control runoff and pollutants from a site during and after construction activities. Before commencing construction activity, the owner or operator of a construction project that will involve soil disturbance of one or more acres must obtain coverage under the State Pollutant Discharge Elimination System (SPDES) General Permit for Stormwater Discharges from Construction Activity (GP-0-10-001). Typical components of a construction SWPPP include:

- General Permit (GP-0-10-001)
- Notice of Intent (NOI) and Acknowledgement From the NYSDEC
- MS4 Acknowledgment Letter (If Site is Located in an MS4)
- Erosion and Sedimentation Control
- SWPPP Inspections
- Post-Construction Stormwater Management
- Notice of Termination (NOT)



Ensol, Inc. has completed numerous construction SWPPP's for a variety of clients including, but not limited to:

- Integrated Waste Shultz Landfill, Inc. (IWSLI)
- Modern Environmental Group
- American Rock Salt Co.
- Black River Generation, LLC
- Natural Environmental, Inc. (NEI)

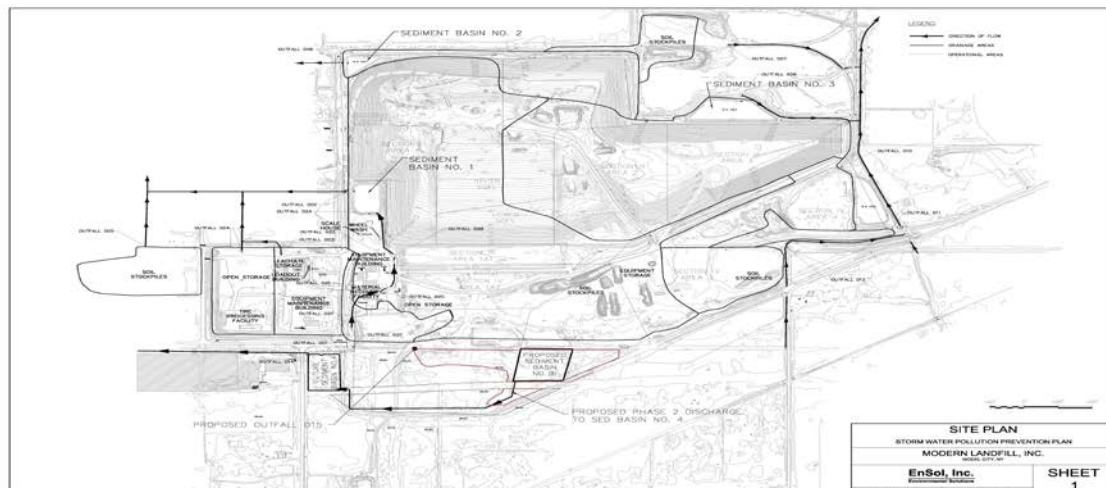
EnSol, Inc.

Engineering • Environmental • Business Consulting
661 Main Street Niagara Falls, NY
www.ensolinc.com

OVERVIEW OF INDUSTRIAL STORMWATER POLLUTION PREVENTION PLANS (SWPPP'S)

Industrial facilities engaged in activities defined in 40 CFR must obtain permit coverage for stormwater discharges to waters of the United States through either an individual industrial SPDES permit, the SPDES Multi-Sector General Permit (MSGP-0-12-001) for Stormwater Discharges Associated with Industrial Activity, or provide certification using the No Exposure Exclusion. The MSGP addresses stormwater runoff from certain industrial activities. This permit requires facilities to develop Stormwater Pollution Prevention Plans (SWPPP's) and report the results of industry-specific monitoring to the NYSDEC. Typical components of an industrial SWPPP include:

- MSGP (GP-0-12-001)
- Notice of Intent (NOI) and Notice of Termination (NOT) Forms
- Potential Pollutant Sources
- Stormwater Controls
- Non-Stormwater Discharges
- Monitoring and Reporting Requirements



Ensol, Inc. has completed numerous industrial SWPPP's for a variety of clients including, but not limited to:

- WeCare Transportation, LLC
- Integrated Waste Shultz Landfill, Inc. (IWSLI)
- Modern Corporation
- JWJ, Inc.
- Town of Tonawanda
- Alternative Waste Services, Inc. (AWS)

EnSol, Inc.

Engineering • Environmental • Business Consulting
661 Main Street Niagara Falls, NY
www.ensolinc.com

OVERVIEW OF TANK DESIGN & INSPECTION SERVICES

EnSol provides complete design, permitting, and tank inspection and assessment services for all Chemical, Petroleum, Leachate, and other Bulk Storage Tanks in compliance with New York State Department of Environmental Conservation (NYSDEC) CBS/PBS/Part 360 & 373 Regulations, NYS Health Dept., and applicable industry standards (i.e., ASTM, API, STI, UL, AWWA, etc.).

EnSol can perform external inspections on in-service tanks using visual and non-destructive testing methods, and detailed internal inspections on empty, out of service tanks for purposes of determining or verifying tank integrity or satisfying Permit and/or Regulatory requirements. Tank cleaning services can be provided by EnSol prior to internal inspections if needed. EnSol has the necessary equipment and personnel trained and experienced in confined space entry for internal tank inspections.

EnSol can also perform inspections on tank repairs and upgrades for regulatory compliance including, but not limited to: weld inspection, sandblasting inspections, coatings inspections, and holiday testing.



EnSol has extensive experience performing tank inspections and other tank related services for a variety of clients including, but not limited to:

- Seneca Meadows Landfill, Inc. (CBS & Leachate)
- NFTA - Buffalo Niagara International Airport (PBS)
- City of Niagara Falls Water Board (CBS & PBS)
- CWM Chemical Services, LLC (CBS, PBS, Leachate)
- Somerset Operating Co., LLC (CBS)
- NOCO Energy Corp (PBS)
- 3M (CBS)
- Losurdo Foods & Friendship Dairies (Food Industry)
- Summit Lubricants (PBS)

EnSol, Inc.

Engineering • Environmental • Business Consulting
661 Main Street Niagara Falls, NY
www.ensolinc.com

OVERVIEW OF SPILL PREVENTION, CONTROL, AND COUNTERMEASURE (SPCC) PLANS

The purpose of a Spill Prevention, Control, and Countermeasure (SPCC) Plan is to form a comprehensive Federal/State spill prevention program that minimizes the potential for discharges. The requirement for preparing and maintaining an SPCC plan applies to all facilities with an aggregate aboveground storage capacity of greater than 1,320 gallons of oil. Only containers of oil with a capacity of 55 gallons or greater are counted. SPCC Plans are required to be prepared in accordance with EPA 40 CFR Part 112 and typical components of an SPCC Plan include:

- General Facility Information
- Spill Response and Reporting
- Spill Prevention, Control, and Countermeasures Provisions
- SPCC Rule Cross-references



Ensol, Inc. has completed numerous SPCC Plans for a variety of clients including, but not limited to:

- American Rock Salt Company
- WeCare Transportation, LLC
- Modern Corporation
- Metalico Transfer, Inc.
- Superior Disposal, Inc.
- JWW, Inc.

EnSol, Inc.

Engineering • Environmental • Business Consulting
661 Main Street Niagara Falls, NY 14301
(716) 285-3920
www.ensolinc.com

OVERVIEW OF COATINGS AND LINING INSPECTIONS

EnSol offers a broad array of coating and lining inspection services to our clients, either as a stand-alone service, or as a complement to our other services. EnSol maintains a full assortment of inspection equipment for any situation, and has the capability of providing NACE Certified Coating Inspectors. Along with the coating and lining inspection equipment, EnSol has powerful drafting and 3-D modeling software to process the information collected in the field and prepare record drawings, certified inspection reports, or any other documentation necessary to your project.



EnSol can provide the following on-site Coating and Lining Inspection services:

- NACE Certified Coating Inspection – CIP Level 1 and 2
- NACE Certified Bridge Specialty – CIP Level 2
- Coating Survey
- Corrosion Evaluation
- Coating Failures Analysis
- Coating and Lining Consulting

EnSol, Inc. has provided coating inspection services for a variety of clients including, but not limited to:

- Monroe County Water Authority
- Town of Hopewell, NY
- Town of Adam Center, NY
- Town of Aurora, NY
- CWM Chemical Services, LLC
- Covanta Energy
- Atlas Copco Corporation
- Severson Environmental Services
- 3M, Elyria, OH
- Diversified Manufacturing, Inc.
- Lonza, Rochester NY
- MRB Group, Inc.
- Global Contracting, Inc.
- Skrlin Coating and Blasting, LTD.
- API Heat Transfer, Inc.
- Cobey, Inc.

EnSol, Inc.

Engineering • Environmental • Business Consulting
661 Main Street Niagara Falls, NY
www.ensolinc.com

OVERVIEW OF CONSTRUCTION MATERIALS TESTING & INSPECTION

EnSol's experienced and certified construction materials engineers and technicians are experienced, certified and trained to meet industry standards and have the expertise to meet applicable ASTM requirements, proper equipment usage, and comply with relevant health and safety criteria. EnSol can provide the following on-site services:

- Soils and Earthwork Testing
- Bearing Capacity Evaluation
- Concrete and Masonry Inspection/Testing
- Reinforcing Steel and Formwork Installation Oversight
- Footing Excavation & Subgrade Observation
- Asphalt Pavement Testing and Inspection



Ensol, Inc. has provided construction materials testing and inspection for a variety of clients including, but not limited to:

- Modern Corporation
- CWM Chemical Services, LLC
- Waste Management, Inc.
- Town of Tonawanda
- Metalico Transfer, Inc.
- Buffalo Recycling Enterprises
- Covanta Energy Corporation
- Fleet Maintenance, Inc.
- Seneca Meadows Landfill, Inc.

EnSol, Inc.

Engineering • Environmental • Business Consulting
661 Main Street Niagara Falls, NY
www.ensolinc.com

OVERVIEW OF LINER INTEGRITY SURVEY SERVICES

EnSol offers liner integrity survey (LIS) and electrical resistivity testing (ERT) services to our clients, either as stand-alone service, or as a complement to our other services. EnSol maintains a full assortment of LIS equipment for almost any situation, and based upon the scope of the project, has the capability of providing a scalable crew size for a more cost-effective approach. Along with the LIS equipment, EnSol has the training and experience necessary to successfully complete the project in accordance with ASTM and industry standards.



EnSol can provide the following Liner Integrity Survey services:

- Soil Covered Liner (e.g. landfill baseliner)
- Water Covered Liner (e.g. lined pond structure containing liquid)
- Exposed Liner (e.g. drained lined pond structure)

EnSol, Inc. has provided LIS services for a variety of clients including, but not limited to:

- Waste Management, Inc.
- Modern Corporation
- The Environmental Service Group (NY) Inc.

Appendix B

EnSol, Inc. *Environmental Solutions*

professional engineering - business consulting

Organizational Chart

ENSOL, INC.
ORGANIZATIONAL CHART
 661 Main Street, Niagara Falls, NY

